

Forever Thoughts

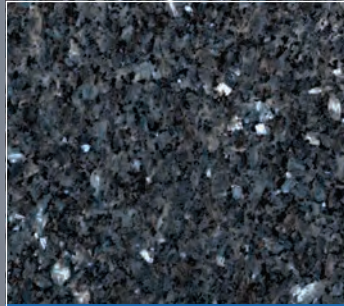
by Hughes of Leeds

Memorial Collection

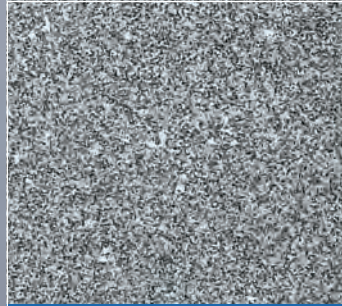




Black Granite



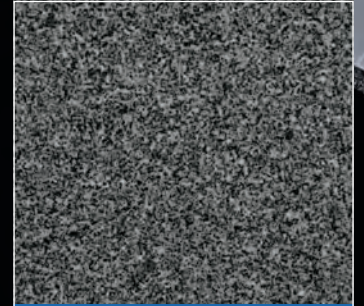
Blue Pearl



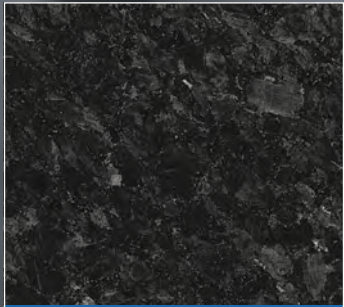
Cathay



Lavender Blue



Chinese Rustenburg



Emerald Pearl



Cats Eye



Karin Grey



Indian Grey



Butterfly Blue



South African Dark Grey



Chinese Evergreen



Sera Grey



Oriental Light Grey



Paradiso

Lawn Memorials 3 - 27

Standard Lawn Memorials

Pitched Edge Lawn Memorials

Tall Lawn Memorials

Modular Cross Memorials

Books and Scrolls 28 - 31

Heart Memorials 32 - 33

Children's Memorials 34 - 41

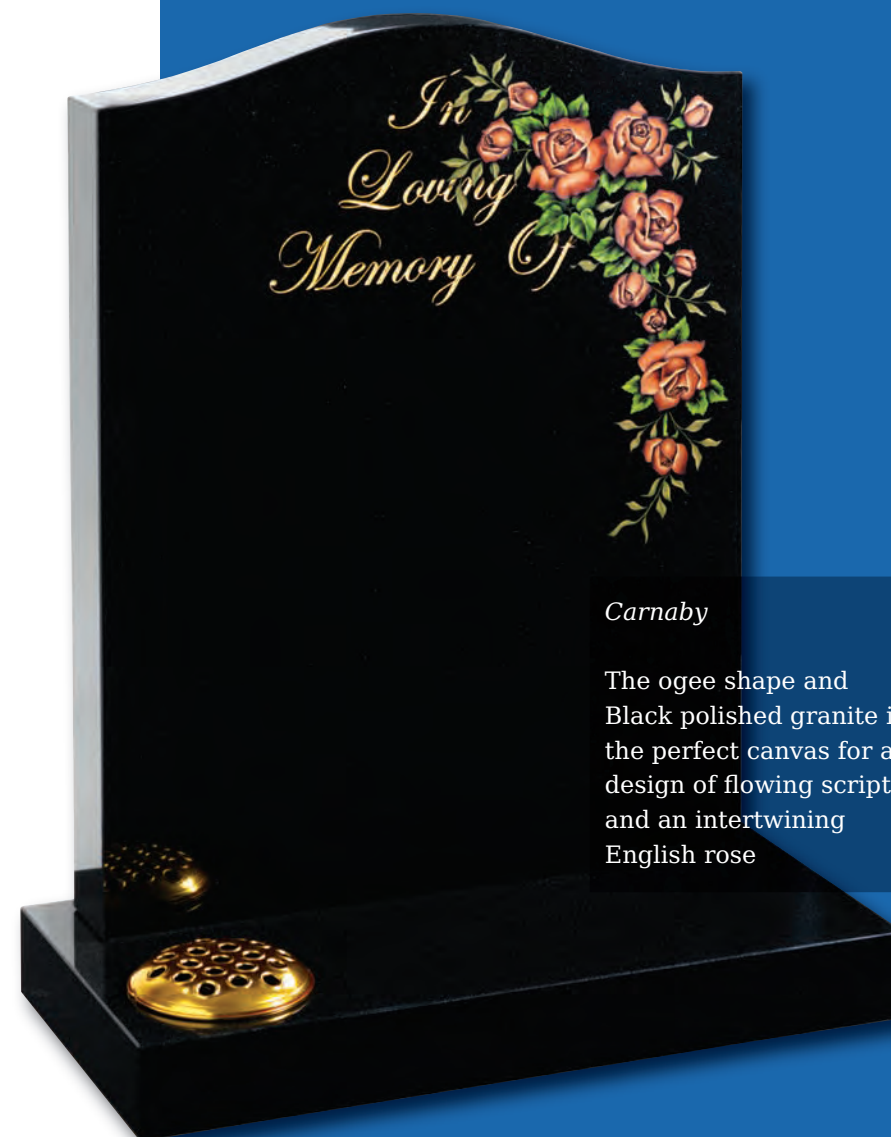
Desks and Wedges 42 - 43

Vases 44 - 45

Churchyard Memorials 46 - 51

Kerb Sets 52 - 58

Memorial Designs 59 - 62



Carnaby

The ogee shape and Black polished granite is the perfect canvas for a design of flowing script and an intertwining English rose

Lawn Memorials



Molescroft

Polished Regal Black, honed Cathay Light Grey or polished Lavender Blue granite memorials, all with deep rose carving



Birdsall

An ogee top Blue Pearl granite memorial with detailed robin design

Ryehill

An ogee shaped Chinese Rustenburg granite memorial with evocative rural motif





Routh

All polished Black granite oblong memorial with an ornate gilded border



Woodmansey

Very popular gold line design shown here on a beautiful Cats Eye or Black granite



Seaton

Classic ogee top with shaded or painted roses on Emerald Pearl granite



Edenfield

Grace and elegance are personified on this Black granite half ogee headstone

Lawn Memorials

Wyton

This simple oblong, all polished Black granite memorial has a beautiful kneeling angel drawn into the stone available in mono or colour options



Stainforth



Ferens



Eston (right)

Eternal flame in a setting of winter leaves and berries illuminates the heading on an off-set peon top, Black granite headstone



Detailed Colour



Detailed Mono



Standard



Beverley

Polished Black granite half ogee shape with a coloured 'Our Lady' design. Alternative more detailed designs are also shown (inset) both with and without colour





Sutton

In Karin Grey granite, this ogee shaped memorial has a simple cross and painted flower in relief

Ainthorpe

All polished Black granite headstone with striking rambling rose design



Keyingham

In Chinese Rustenburg granite, ogee top with simple cross and rose ornamentation or Black granite with colour cross and rose option



Whitedale

All polished Indian Light Grey granite with stunning metallic finish to the rose design

Lawn Memorials



Aldbrough

A camber top, polished Black granite memorial. Any favourite pastime can be illustrated by our craftsmen (see above)



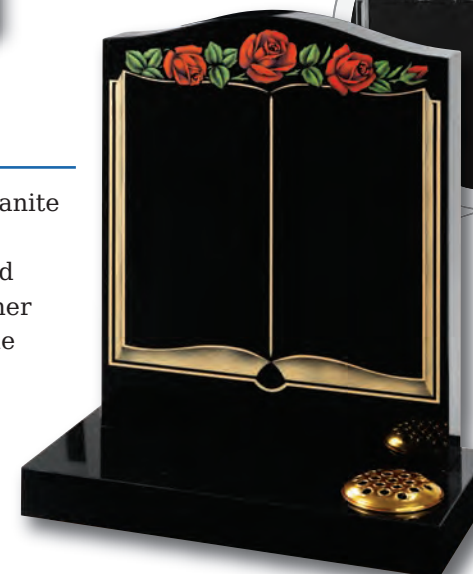
Hessle

This simple camber top design is the perfect background for the modern stonemasons art



Pickering

An all polished Black granite memorial with ogee top decorated with roses and open book available either coloured or monochrome



Kirkham

Ogee top memorial with carved cross design, painted to give a '3D' effect shown on Black and Cathay Light Grey granites





Lawn Memorials

Roseberry (below)

The gentle contours of the granite compliment the tranquillity of the countryside themed ornament in polished Black granite



Elmswell (above)

Loving friendship remembered on this simple polished Black granite ogee shaped headstone

Denby (left)

Floral panels add a new dimension to this original shaped stone, framing the area to be inscribed. Shown in Sera Grey granite



Eppleworth

Black granite ogee shaped with a non-reflective honed finish. Our range of wildlife designs are deeply carved and hand painted

Lawn Memorials

Dunswell

A personal message with up to 100 characters can be added to this charming posy design on polished Black granite with chamfer detail



Goathland

The bridge is a symbol of the enduring bond of love. This memorial is an ogee shape Black granite with distinctive stopped chamfers and a splayed base



Lockington

Loving Sentiments or a loved ones photo (via photo plaque) can be placed within the "loket" to further personalise this exquisite design. All polished Black granite





Kinsley

The barrel sides and flowing profile of this compact Black granite set features an entwined rings ornament



Danthorpe



Winterburn

Hazelwood

Innovative lawn memorials with contrasting coloured removable plaques. Additional inscriptions or designs can easily be added without removing the full memorial from the cemetery. Shown in Sera Grey granite with chamfered edges and Lavender Blue granite with Black granite plaques.

This concept can work with many of our memorial headstones



Highgate

Garden scene with textured stone wall incorporates the Evergreen granite effectively

Lawn Memorials



Normanby 'Poppies' (rear)
Normanby 'Roses' (front)

A classic 'Norman Round' shape utilising a moulded edge to the front and back. Shown in Cathay Light Grey and Black granites



Grimston

Ornate silvered Celtic band with carved and painted gemstones on a classic Normanby shaped headstone in honed South African Dark Grey granite

Swanland

Traditional Black granite headstone with two flower vases and elegant swan artwork



Leconfield

Traditional image of an open book and rose, sandblasted and painted to give a three dimensional effect. Shown in Black granite

Wickersey

This Black granite distinctively shaped memorial features a design of modern contemporary symbolism embracing a brief message of your choice

Crookley



Barley

Spiritual reflection with images of The Sacred Heart or The Good Shepherd (Crookley). All polished Black granite

Huggate

On this Butterfly Blue granite headstone your loved ones initials are for ever entwined in the centre of these jewellery influenced hearts



Lawn Memorials



Selby (rear)

A deep carved cross entwined with either a rose, thistle or lily make this Black all polished memorial look stunning

Thearne (front)

A delicate rose set within a heart compliment this popular shaped Lavender Blue polished memorial



Alternative Designs



Ilkley

Classic Bible and rosary bead design on all polished Paradiso granite



Bainton

A charming scene adds to the simple beauty of this shaped and chamfered Black granite memorial



Skipsea

The polished, rounded form resembles stones from the seashore. In Lavender Blue or Imperial Green granite



Chamfer detail to front and rear



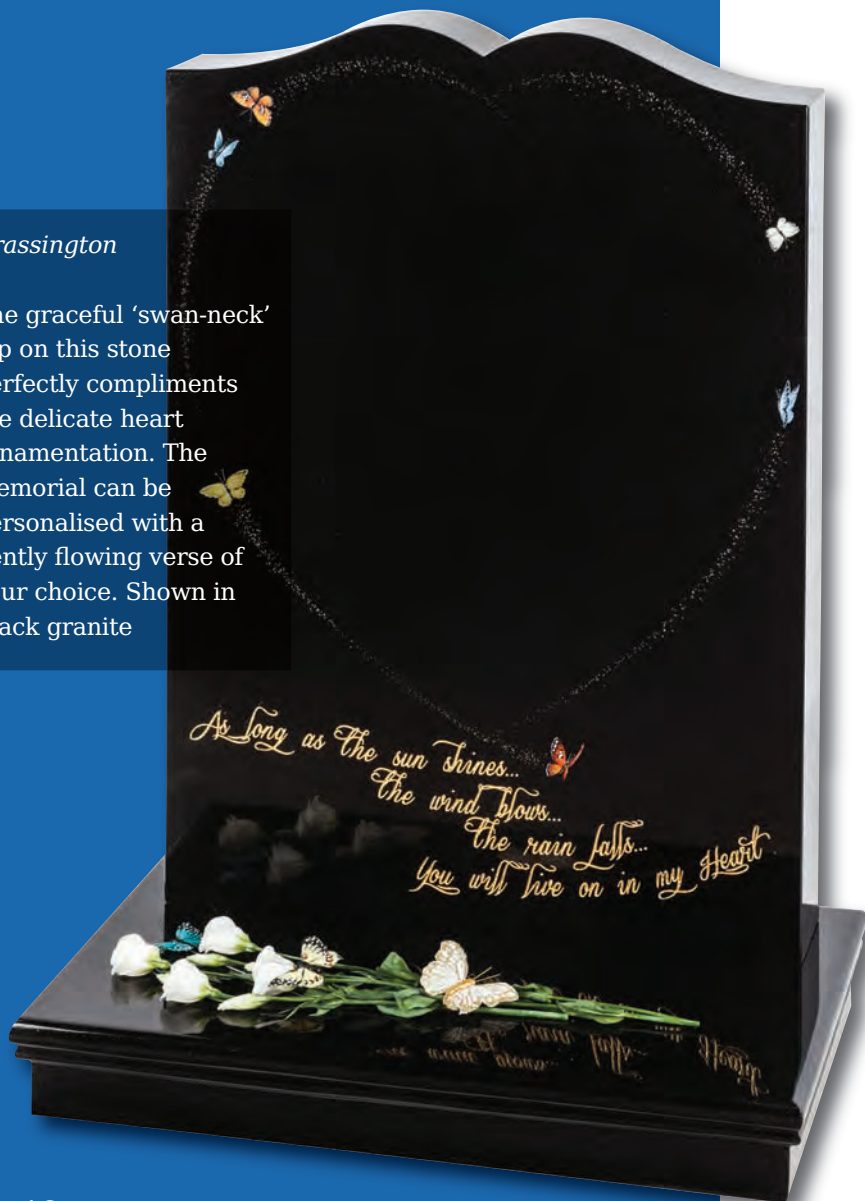
*Eyeston (Rear)
Camerton (Front)*

A contemporary shape and modern designs create a stylish look. The stylised Camerton orchid design winds up the broad chamfered sides of this elegant memorial. Shown in Black granite with Eyeston shown in Butterfly Blue granite

Lawn Memorials

Grassington

The graceful 'swan-neck' top on this stone perfectly compliments the delicate heart ornamentation. The memorial can be personalised with a gently flowing verse of your choice. Shown in Black granite



Tunstall

Tranquil waterlily design shown in Black granite



Pearson (above)

Traditional shaped Imperial Green memorial accentuated by stylish chamfers



Wheldrake (left)

This charming design reflects our rich heritage and love of the natural world. Shown in Lavender Blue granite



Kingswood

The bowed profile of this memorial is decorated with a deep carved floral design in Lavender Blue granite



Hasholme (above)

This beautiful Emerald Pearl granite memorial needs only a delicate floral design to add to its soft outline of flowing curves and chamfers

Staxton

Distinguished Emerald Pearl granite pillared memorial with heart detail



Eastburn

Lavender Blue granite with a 'swan-neck' top headstone, graced with a statuesque lamenting angel ornament

Lawn Memorials

Kingston

A polished South African Dark Grey Granite Gothic Shape with deep sandblast floral design



Broomfleet

A norman round shaped stone with decorative, silver Celtic lettering on a part polished South African Dark Grey granite

Ferriby

Part polished South African Dark Grey granite with carved flowers to headstone and base





Garrowby

A fresh approach to the classic church window design shown on South African Dark Grey granite



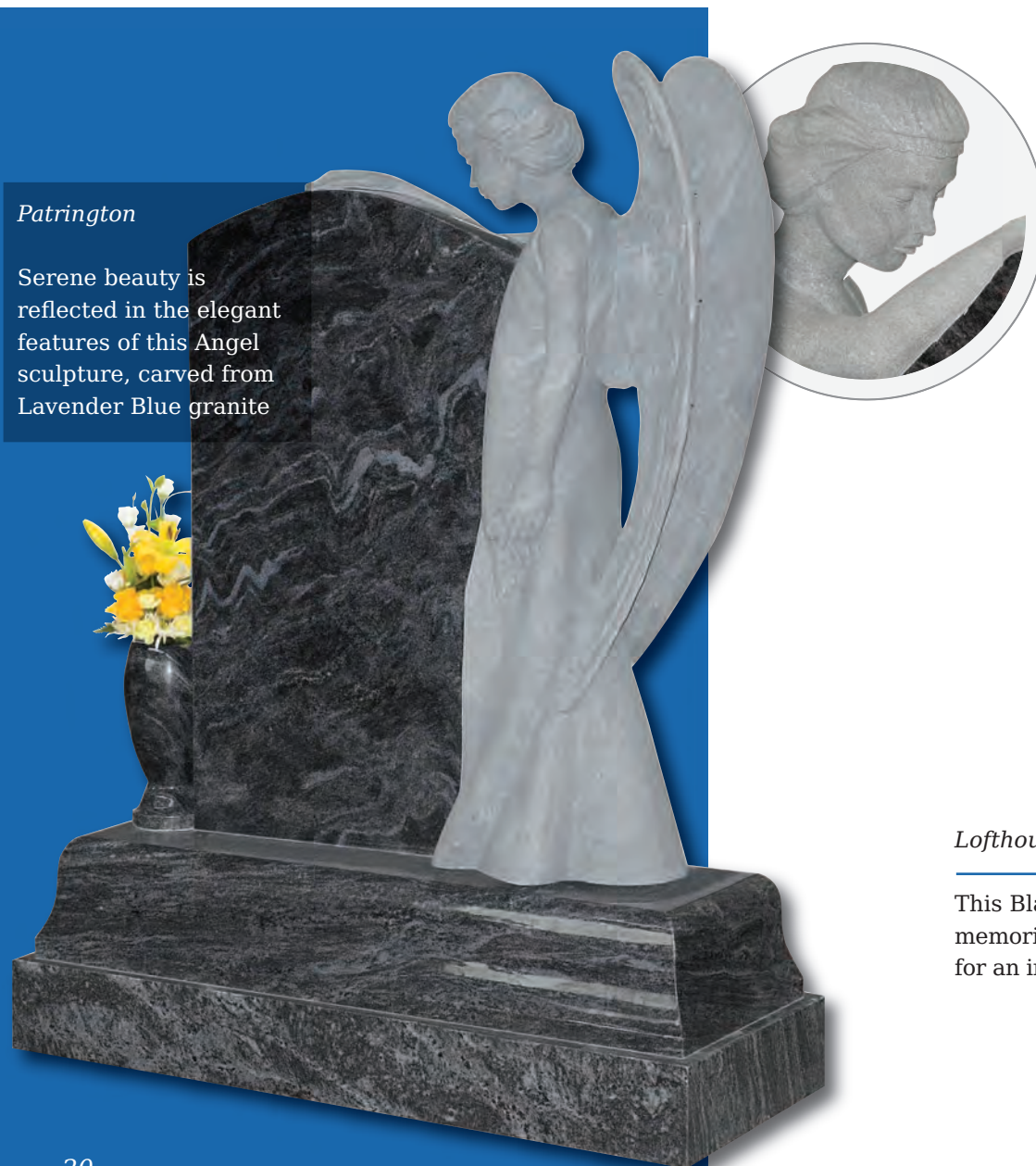
Carlton

Fresh interpretation of the traditional gothic shape, your chosen inscription is framed within a delicate floral archway. Karin Grey or Black granite

Lawn Memorials

Patrington

Serene beauty is reflected in the elegant features of this Angel sculpture, carved from Lavender Blue granite



Minster

This stately memorial was inspired by classical architecture. Seen here in Chinese Rustenburg granite



Lofthouse

This Black granite pillar-sided memorial provides the perfect setting for an image of the last supper





Queensbury

A gracefully sculpted Angel with prominent polished granite wings shown in Lavender Blue and Blue Pearl



Woodhouse

This Imperial Green granite memorial has a tall vase, making it easier to place flowers for those with limited mobility. This striking design also allows space for personal sentiments



Rossington

Unique elliptically shaped memorial whose smooth contours look appealing from any angle, with a 'wrap around' climbing flower ornament. Shown in Indian Aurora granite

Pitched Edge Lawn Memorials



Etton

The timeless beauty of a Celtic cross sits proudly with a rustic pitched edge Lavender Blue granite monument



Aysgarth

Picturesque waterfall and forest scene, can be created with or without the heading. Shown in Black granite with Pitched Edges

Hatfield

Timeless and classic this polished oval is framed by four deep carved roses and rustic pitched edges. Shown in Black granite



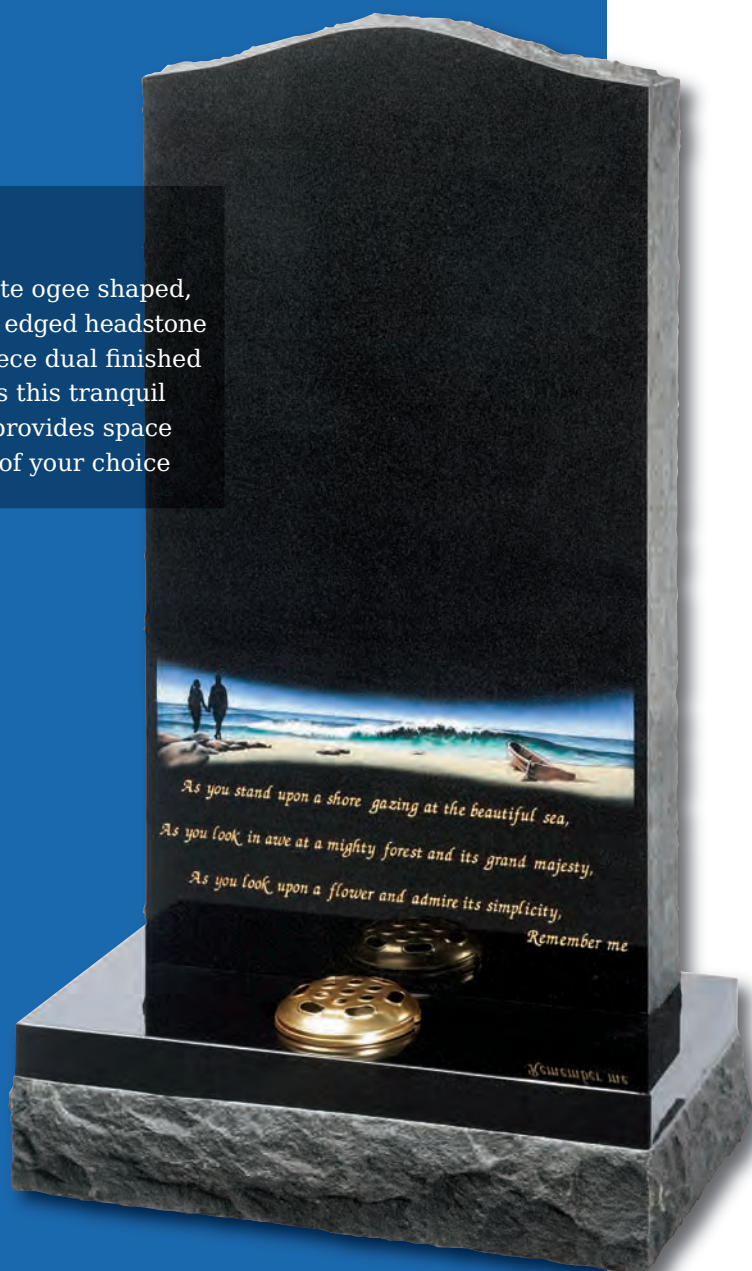
Pitched Edge Lawn Memorials



Tall Lawn Memorials

Kinghorn

Black granite ogee shaped, large rustic edged headstone on a one-piece dual finished base frames this tranquil scene and provides space for a verse of your choice



Flinton

A deep blasted Celtic love knot entwined with carved and hand painted wild roses. Combine with the pitched edges to create a truly rustic memorial in Indian Grey granite

Elgin

Simple beauty of a dove in flight, timeless symbol of eternal peace on a statuesque large ogee. Shown in Black granite



Flower design



Thistle design



Cranswick

A prominent Black granite headstone with neatly defined chamfers. The ornate carving (thistle or flowers) can be hand finished in Verdigris or Bronze paint effect

Inverness

This large memorial is pictured with the Selby cross and thistle. Shown in Black granite



Modular Cross Memorials



Ripon

The Latin cross can be enhanced with a deep sand-blasted Celtic inspired design, or an ornament of your choice



Ripon / Sowerby / Hepworth

Variations on a popular theme, offering multiple inscription possibilities. Sowerby is based on a traditional cross and die. Hepworth features a beautifully detailed scroll, while the Ripon shows a highly polished curved page book

Sowerby (above) / Hepworth (right)

Each version is available in either Black, South African Dark Grey or Impala Grey granites





Books and Scrolls

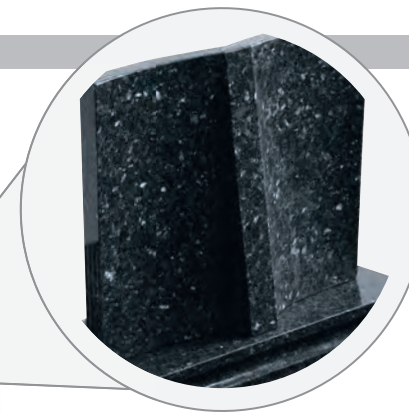
Wilberforce

An unconventional, stylised scroll headstone in Black granite



Bielby

This striking design combines a stylish 'paperback' appearance with secure fixing, shown here in Blue Pearl and Black granite



Bramley

Smaller book set with shaped pages in Black granite



Melton

This South African Dark Grey granite book tablet is part polished to give contrast to the stone



Barmston

Blue Pearl granite. Classic, highly detailed book adapted for modern fixing requirements



Cropton

Contemporary version of a traditional scroll memorial in polished Chinese Rustenburg granite. Forget-me-nots in a deep blasted panel adorn both sides



Books and Scrolls

Dodworth

A flat faced book tablet with subtle to top profile, reclining on a tall vase which gives stability and security. The delicate rosebud can be coloured to your specification. Shown in Star Galaxy granite



Buxton with Raiser Base

Our classic Buxton book with a raised base. Carved from Black granite



Buxton

Classic book shape with curved pages and a tooled cord and tassel carved from Black granite





Heart Memorials

Linthorpe

Lilies are a long established symbol of mourning. They are shown here carved on a contemporary heart shaped stone with either natural, unpainted flowers or with an 'antiqued' paint effect. Shown in Black granite



Hotham

Elegant polished Black granite heart shape with contrasting carved roses



Brotherton

Intricately carved twisted heart pendant on a ribbon. Shown in Black granite



Applegarth

Delicately carved roses shown with an example of 3 colours. Roses can be produced in a single colour or a variety as shown. Shown in South African Dark Grey granite



Appleton

The stunning rounded edges of the heart are complemented by a highly polished 'rose bowl' vase. Pictured here in Lavender Blue granite

Pollington

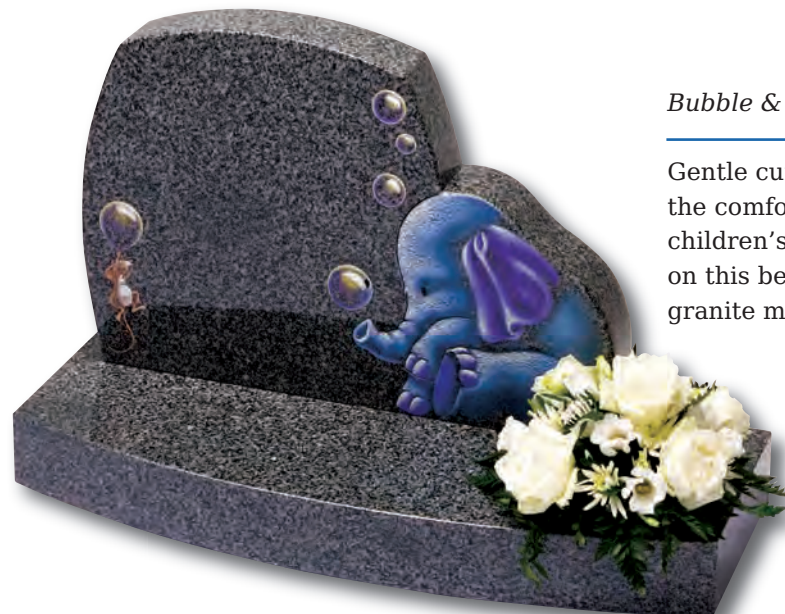
A beautiful posy design and gilded line adds something special to the elegant heart shaped Black granite memorial



Children's Memorials

Fairytale Castle

Even the most imaginative requests can be turned into something special. Let us guide you through the process of choosing a lasting tribute to your loved one



Bubble & Squeak

Gentle curves further enhance the comforting softness of the children's characters illustrated on this beautiful polished Impala granite memorial



Shooting Star

A fleeting moment in ones life is symbolised by this colourful shooting star design on this Black granite ogee top memorial. Alternative design is shown (inset)



Children's Memorials



Big Teddy

Subtle features enhance this teddy bear shaped memorial. The base has a centre splay adding extra inscription space. Black granite and Balmoral Red granite options are shown here



Fairy Alphabet

Fresh design concepts combining fairytale images and wording to create truly individual memorials. Pictured here in Ruby Red granite



Little Prince Castle

Boys castle, showing an alternative to the fairytale castle which is hand carved to suit the softer, lighter Sera Grey granite

Children's Memorials

Lullaby Memorials

Whilst our children sleep they are remembered with this range of lullaby influenced designs

Sweet Dreams

Polished Rustenburg granite



Make a Wish

Polished black granite



Furry Friends

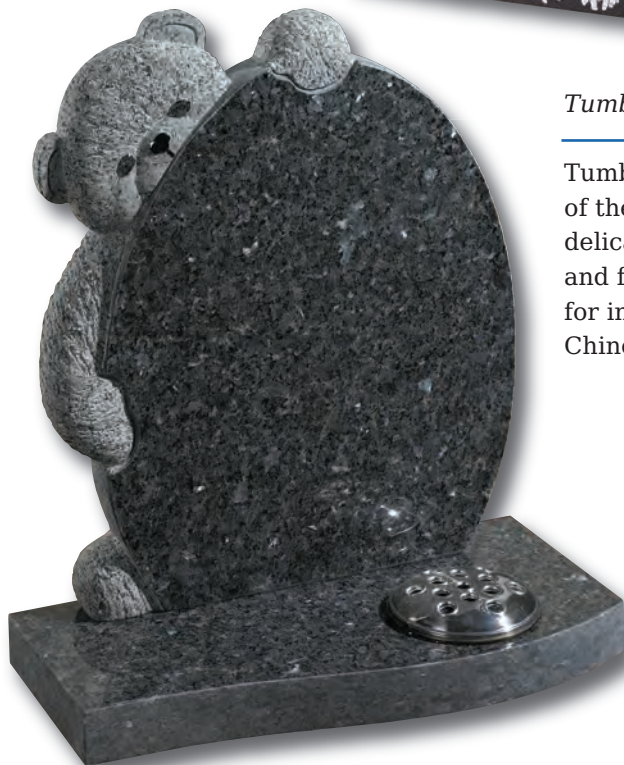
Polished South African dark grey granite

Children's Memorials



Tumbling Ted

Tumbling Ted decorates the front of the base leaving both the delicately carved teddy with heart and free standing book available for inscriptions. Black granite and Chinese Wine granite



Bentley

Classic and endearing 'Bentley Bear' hand carved in Blue Pearl granite



Fairy Inscription

Our fairytale images can be combined with any letter to truly personalise your memorial. Stone shown is Blue Pearl granite

Children's Memorials

Elvington

The sweeping shape and inspirational design create a magical 'fairytale' memorial. Pictured here in Black granite



Ellie



Roy



Cordy



Shabby



Fred Bear



Aran



Dora



Silka



Paisley



Appleton

A beautiful Black granite heart shaped memorial with a polished rose bowl vase. Choose from a selection of detailed 'soft toy' character designs



Ollie Bear

A soft, warm coloured granite ogee with a classic carved teddy bear holding a book. Perfect for inscribing a small, personal message. Shown in Indian Aurora granite

Children's Memorial Designs

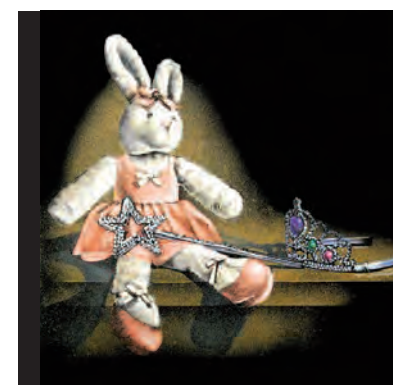
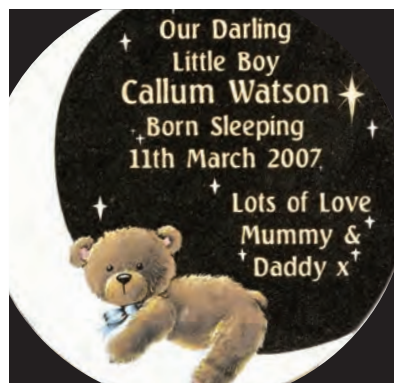


Child's Drawing Design

For an extra special touch, we are able to translate a child's own drawing into a personal design suitable for use on a vase, desk or memorial

An example of this is shown at the top of the page. (Original drawing shown right. Design shown on Black granite)

This page showcases a selection of designs created specifically for children's memorials, adding a more personal touch. Our artists are able to take your ideas and help turn them into a poignant and lasting tribute





Desks & Wedges



*Scroll desk vase shown
in Impala Grey and
Black granites*



*Black granite desk
tablet. 0/229G*



*Updated version of a traditional
book design. 0/242G*

*Desk with moulded edges in
Black granite. 0/246G*



*Desk tablet in Ruby Red
granite. 0/231G*



*Desk with pitched edge in
Blue Pearl granite. 0/244G*

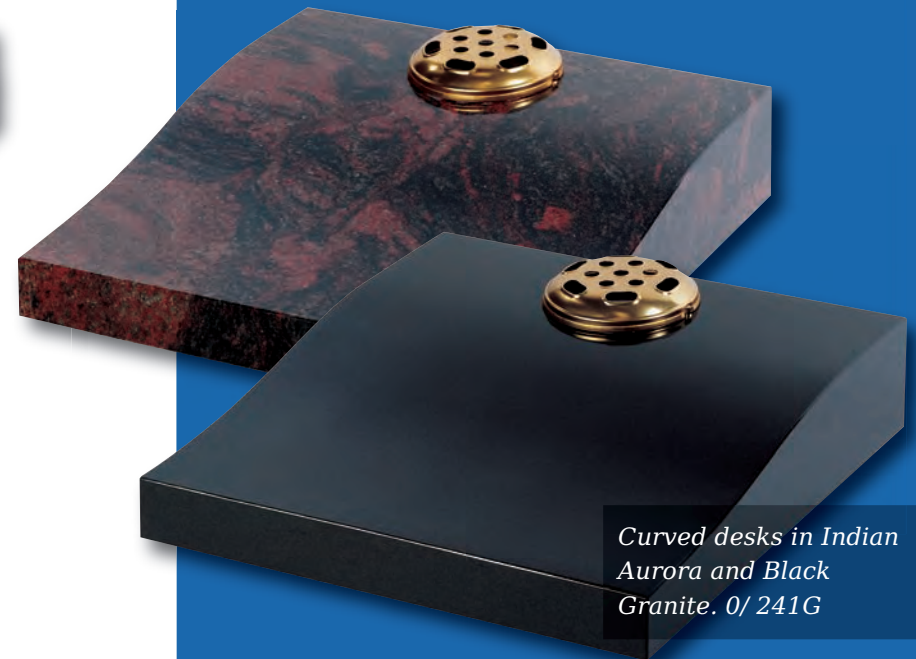
*Blue Pearl granite wedge
with pitched edge. 0/243G*



*South African Dark Grey
polished wedge. 0/230G*



*Desk with raised book in
Black Granite. 0/245G*



*Curved desks in Indian
Aurora and Black
Granite. 0/ 241G*

Vases



0/247G

Barrel sided vase, with Angels lament design in Blue Pearl granite



Lavender Blue granite shaped vase. 0/237G



Lavender Blue granite vase and base. 0/239G



South African Dark Grey shaped vase. 0/236G



Marble Vase

The cushioned edges to this marble vase create a gentle look



Square vases - available in most colours 0/234G



Black granite heart vase 0/232G



Black granite Vase with two flower containers and rose design 0/240G

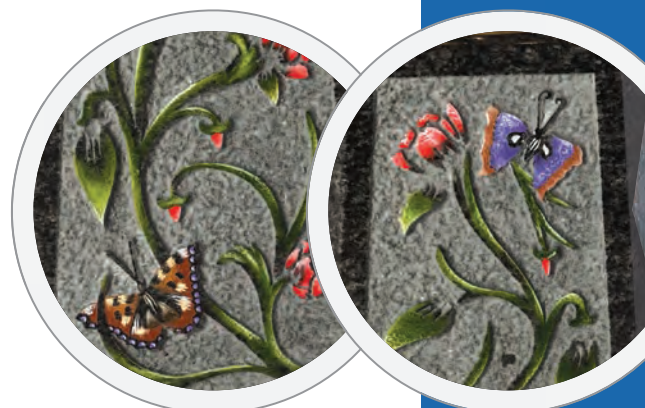


Black granite Castleton turned vase

Detail of heart motif



Details on reverse of large vase



0248G / 0249G

Large and small 'Pepper pot' Vases. The 6 faces create multiple inscription and ornamentation possibilities. Shown in South African Dark Grey granite and Black granite



Churchyard Memorials

Westfield

A deep carved floral design is used to great effect on this imaginatively shaped Serena stone memorial




Langtoft

This ogee top memorial in South African Dark Grey granite has a honed finish and a deep cut floral border design



Allerston

A traditional shape in Yorkshire stone with classic cross design. UK sourced material

 The UK has a wide range of stunning stones for you to choose from. As well as significantly reducing the carbon footprint involved in transportation, you can be sure that a selection of these stones have been quarried, manufactured and artistically detailed right here in the UK. UK sourced memorials are indicated in their individual descriptions

Molescroft

Honed Cathay Light Grey memorial with deep rose carving



Humbleton

Norman round shape, South African Dark Grey granite. Decorative Celtic lettering in a part honed 'churchyard' finish

Easington

This dove of peace is carved from a solid slab of Crown stone with architectural design features and bow fronted base



Churchyard Memorials

Thirtleby 

A simple floral design with a gothic top and chamfered base in Yorkshire stone. UK sourced material



Bransdale 

Classic ogee top in beautiful Cornish granite UK sourced material

Oakington

All honed Indian Grey memorial ogee shaped top with a separate flower vase



Grindale

A plain carved and uncoloured Celtic design on a Norman round shape. Shown in South African Dark Grey granite with an unpolished honed finish



Copley

'Scroll' memorials have been a familiar feature of churchyards for generations. This streamlined version in honed Chinese Rustenburg granite features deeply incised poppy designs to both sides



Ottringham

A delicate posy carving top centre of this majestic looking Nabresina Memorial

Churchyard Memorials

Knaresborough

A floral carved, uncoloured cross, an elegant alternative to a traditional Latin cross. Shown in Serena stone



Clifton

A classic slate memorial with Celtic Knot design. UK sourced material



Circular Designs (left)

The Clifton, Amplethorpe and Bessingby stones all incorporate a circular, hand carved design. With these stones, any one of the three designs on the left (as well as the designs shown on the stones in these pictures) can be chosen for your headstone. Alternatively we can create a design based on your own ideas



Bessingby 

Delicate snowdrops are intricately carved in beautiful Portland stone
UK sourced material



Amplethorpe

This all honed Dark Grey granite memorial is enhanced by a stylish chamfer and carving



Sproatley

Nabresina memorial with finely moulded edges, rounded shoulders and carving of a delicate cross and rose

Kerb Set Memorials

Edge profiles

Edge profiles are a way to further personalise a memorial. We are happy to advise you on using these optional kerb profiles

Moulded

Rolling

Chamfered

Round

Splayed

Camber

Half Ogee

Scotia

The following pages are dedicated to kerb sets (full lawn type memorials) and have been sensitively designed by our team of artists displaying a wide range of styles and options to individualise and personalise a fitting memorial memorial for a loved one

We have also created a selection of compact memorials that are designed to be placed within the kerb area (p58)

Newsham

Interchangeable set featuring splayed base and foot-kerb, providing additional lettering and design capacity, **which can be complimented by the selection of any headstone from our brochure range**



Farndale

In Lavender Blue granite headstone and base option. The corner posts on this set have been bored to accept flower containers



Newsham with Stamford

The Imperial Green granite set below comprises the 'Newsham' set with a 'Stamford' headstone shown here with an alternative 'Rose Bowl' ornament. This set could be further enhanced by choosing an optional kerb profile (as shown left)

Kerb Set Memorials



Helmsley

The honed finish and elegant contours of this Evergreen granite memorial are complimented by the distinctive shaded and tinted ornaments



Coniston

In Black granite, a traditionally styled headpiece with square section kerbs and corner posts



Kerb Set Memorials

Gowthorpe (with Blue Pearl headstone)

A garden option can be achieved as shown.
In Sera Grey granite and Blue Pearl granite



Houghton (with Linthorpe headstone)

**Select any headstone of your choice
and add various compact memorial options**

This kerb set is designed to create a truly personal area for your plot, a place of quiet contemplation and rest. Shown in Sera Grey granite and Black granite



Kerb Set Memorials



Sandholm

Fully covered kerb memorial with contemporary features shown in Oriental Light Grey granite. The contours of the cover slab are replicated on the base recess

Laytham

Intricately carved lattice work and contrasting material finishes embellish this Dark Grey granite memorial

Castleton (right)

Elegantly designed Black granite balustrade set with a delicate flowing ornamental design



Cayton (inset above)

Alternative version of the 'Castleton' set, the narrower headstone creates space for flower containers, with splayed detail repeated on the rear of the base

Harewood

Classically styled full lawn type memorial with cover slab in Cathay Light Grey granite, featuring ornamentation enhanced with a metallic paint finish



Kerb Set Options

Compact memorials (shown right) are designed to be placed within the kerb area. These are an ideal and fitting tribute for family, friends or colleagues to convey their message of remembrance in addition to the main memorial

Shown below are a selection of recycled glass and natural stone chippings perfect for complimenting any kerb set



Cobalt Blue Glass



Green Glass



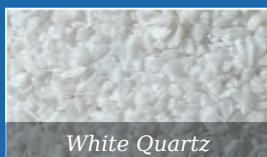
turquoise Glass



Ice White Glass



Lilac Glass



White Quartz



Polished Pebbles



Slate



Grey Granite



White Marble



Rosebud Tablet

A permanent 'card' on which to inscribe a farewell message



Wedge

In Black granite offering a larger inscription area



Upright Book

Contoured front and back in Cathay Light Grey granite



Heart

Rounded edges give a cushioned effect to this pedestal mounted Lavender Blue granite plaque



Reclined Book

Elegantly detailed in all polished South African Dark Grey granite

Memorial Designs



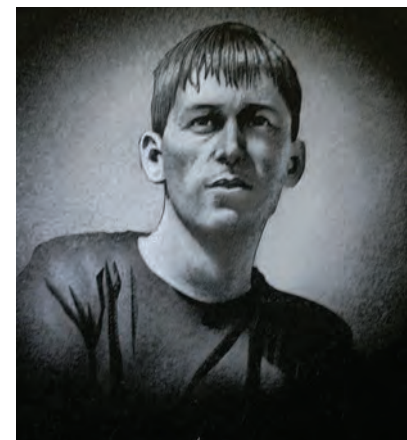
Our award winning artists and craftsmen pride themselves on creating unique, highly detailed pieces of art for use in many different ways on our range of memorials. This helps ensure that any memorial chosen is personal enough to respectfully mark a person's life. On the next few pages are a small selection of the many designs we have created over the years (along with the Children's design selection on page 40)



Memorial Designs

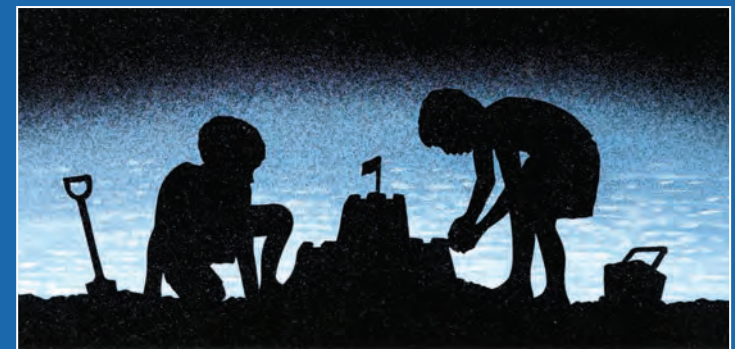
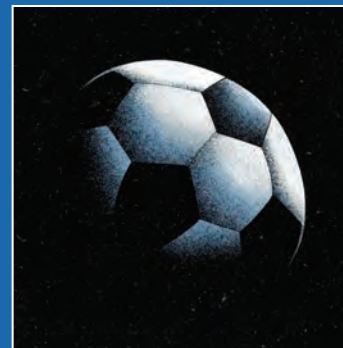
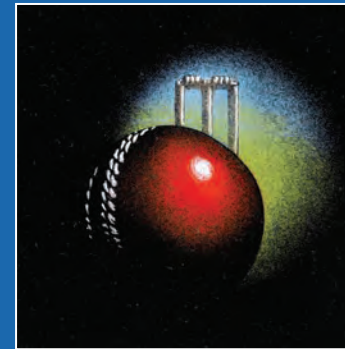


More intricate custom designs are always available. We can transform a basic idea into a beautiful design to compliment any memorial





An official badge or a family crest can be translated into a memorial design to suit most spaces



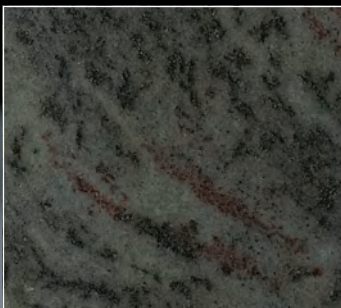
We have a number of designs that are ideal for products where space is limited such as vases and desk tablets. Above are a few of these designs

Memorial Designs

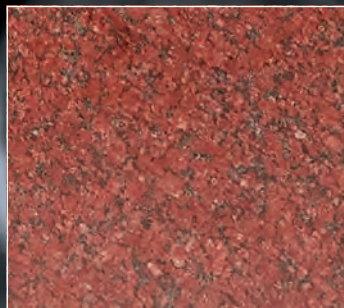


Monochrome images work particularly well on darker polished granite memorials

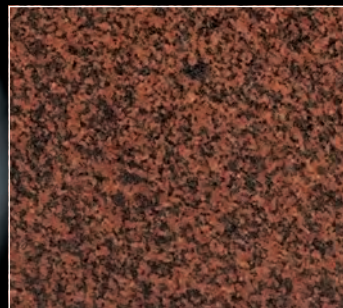




Imperial Green



Ruby Red



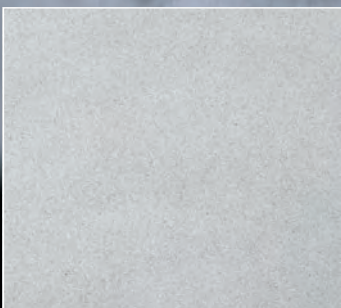
Balmoral Red



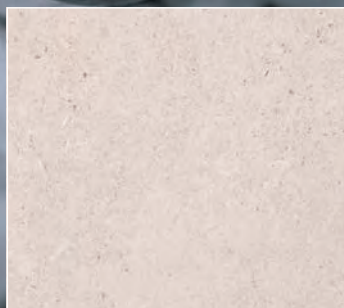
Cornish De Lank



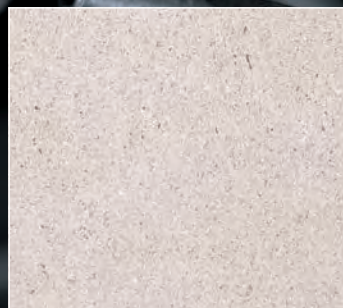
York Stone



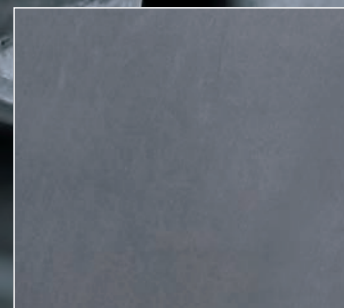
Serena Stone



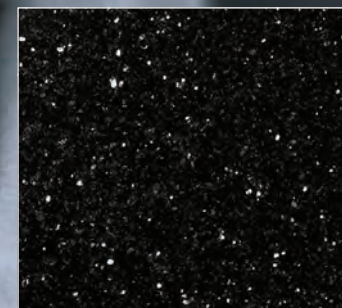
Crown Stone



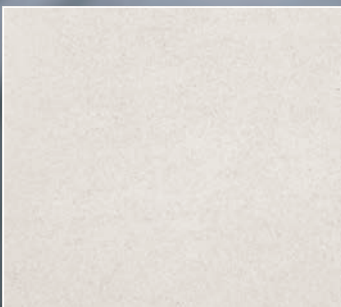
Nabresina



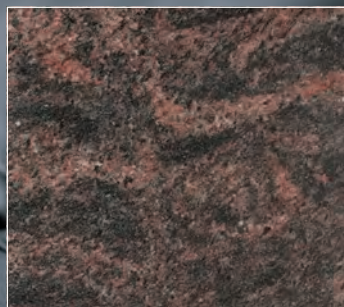
Blue / Black Slate



Star Galaxy



Portland Stone



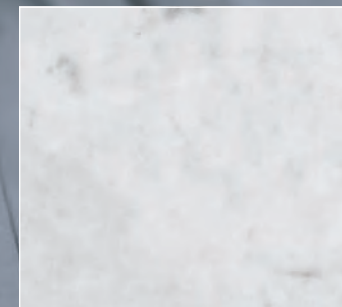
Aurora



Regal Black



Impala Grey



White Carrara Marble

In keeping with our policy of continuous product development, we reserve the right to change colours, designs, descriptions or methods of manufacture. Such changes may be made without prior notice and without incurring any liability.

All natural quarried materials are supplied subject to natural markings and textures.

Colour reproduction is as close as printing techniques allow. All memorials in this brochure are the copyright of Odlings Limited.



www.foreverthoughtsltd.com

Hepton Court, York Road, Leeds, LS9 6PW,

Tel: 0113 2496317, Fax: 0113 2359884,

Email: fin@hughesfuneralservices.co.uk